

WATT'S HAPPENING

SCENIC RIVERS ENERGY COOPERATIVE
LANCASTER, DARLINGTON AND GAYS MILLS, WISCONSIN

Director Nominations Needed

Would you like to be a member of the cooperative's Board of Directors and help set policies to serve our more than 10,000 members in the 3-county area? Nominations for directors in districts 1, 5, and 9 are needed for the election at our next annual meeting. If you are interested in serving on the board of directors and live in one of these districts, please send a letter to the following address:

ATTN: Nominating Committee
Scenic Rivers Energy Cooperative
231 N Sheridan Street
Lancaster WI 53813

The Nominating Committee will meet early in November to finalize the nominations. Therefore, if you are interested, please notify our office as soon as possible. The townships and qualifications for

directors are as follows:

District 1 - Freeman, Haney (west of Kickapoo River), Seneca and Utica townships

District 5 - Beetown, Bloomington, Cassville, Glen Haven, Little Grant, North Lancaster, Patch Grove, South Lancaster, and Wyalusing townships

District 9 - Adams, Argyle, Blanchard, Fayette, Jordan, Lamont, Moscow, Nora, Wayne, Winslow and Wiota townships

Director Qualifications:

A director shall be elected to a three- (3) year term. No person shall be eligible to become or remain a director or to hold any position of trust in the Cooperative, who:

- 1) is not a member and a bona fide resident of the director district which he or she has been

nominated or elected to represent and who does not receive service from the cooperative at his or her residential abode; or

- 2) is in any way employed by or financially interested in a competing enterprise or a business selling energy or supplies to the cooperative, or a business primarily engaged in selling electrical or plumbing appliances, fixtures or supplies to members of the cooperative; or
- 3) is an incumbent of, or candidate for, an elective county, state or federal office filled by election on a party ticket.

“If you are interested in serving on the board of directors and live in districts 1, 5 or 9, please send us a letter...”

New Water Heater Prices

Due to a price increase in the A. O. Smith brand of water heaters, which we currently sell to our members, we have updated our prices as follows: Effective immediately:

- 52 gallon - \$325 (no member discount offered)**
- 80 gallon - \$440 (\$200 member discount) - final cost \$240**
- 120 gallon - \$670 (\$360 member discount) - final cost \$310**

A member discount is given on the cost of new 80 and 120 gallon water heaters when a load management control is installed on the heater. If you are interested in buying a water heater from us or would like more information, call Leann Handel at 1-800-236-2141, extension 105.

Vitality NOTE

Patients remember only about 10 percent of what their doctors tell them during office visits, according to studies. And the more serious the problem, the less likely they are to recall instructions. So take a pen and paper to your appointments and write down your doctor's answers to your questions. *—Redbook*



Currently Cooking



We were at a get-together that had pasta salad with hard salami in it. I liked the flavor, so I asked the hostess for the recipe. This is a big recipe and can feed a crowd.

Salami Pasta Salad

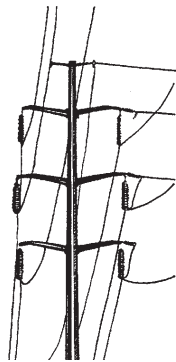
- 1 lb. of mixed colored rotini noodles, cooked and drained
- 1 medium onion, chopped
- ½ stalk of celery, chopped (I used more when I made it)
- 2 medium green peppers, diced
- ½ lb. of hard salami, cut up
- ½ lb. of provolone or mozzarella cheese, diced
- 8 oz. green olives, sliced

Mix together and add 6 oz. of vinegar and oil dressing or zesty Italian salad dressing. Cherry tomatoes can be added. This salad is better if made a day ahead.

Look Up

Building under power lines is unsafe and blocks access for maintenance.

Once high-voltage lines are cleared of trees and brush, the area beneath them becomes a tempting spot in which to build garages, outbuildings, additions, and other structures. Unfortunately, such construction often violates electrical codes and can create a variety of other problems. Line crews must be able to drive along cleared lines to access lines for repair or maintenance, which is not possible if structures block the route.

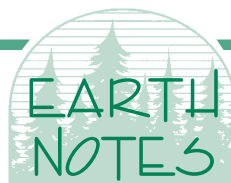


In addition, building under power lines is hazardous for those involved in the construction and use of those buildings. It's all too easy to come into life-threatening contact with those lines while clearing roofs of snow, installing antennas, or doing other work nearby.

No structures (or trees) should be placed within 20 feet of a single-phase line and within 30 feet of a three-phase line. If you have any questions about whether your project will conflict with electric lines, contact Scenic Rivers Energy Cooperative at 1-800-236-2141 in Lancaster, 1-800-236-6656 in Darlington or 1-888-735-4314 in Gays Mills.

To clarify

In our last Earth Notes we listed things that you can do to protect wildlife resources and preserve biodiversity. We need to clarify that the furs not to buy are from endangered and threatened animal species.



"The main ingredients of an environmental ethic are caring about the planet and all of its inhabitants, allowing unselfishness to control the immediate self-interest that harms others, and living each day so as to leave the lightest possible footprints on the planet."

—Robert Cahn

Just For Fun



Things to Remember by Dave Barry

- ▼ Never, under any circumstances, take a sleeping pill and a laxative on the same night.
- ▼ People who want to share their religious views with you almost never want you to share yours with them.
- ▼ You should not confuse your career with your life.
- ▼ Nobody cares if you can't dance well. Just get up and dance.
- ▼ Never lick a steak knife.
- ▼ The most destructive force in the universe is gossip.
- ▼ There comes a time when you should stop expecting other people to make a big deal about your birthday. That time is age eleven.
- ▼ A person, who is nice to you, but rude to the waiter, is not a nice person. (This is very important. Pay attention. It never fails.)
- ▼ Your friends love you anyway.
- ▼ Never be afraid to try something new. Remember that a lone amateur built the Ark. A large group of professionals built the Titanic.

OF INTEREST TO MEMBERS

Meter reading days for September are 24, 25, 27, and 28.

WATT'S HAPPENING

Watt's Happening is published monthly as an information service to the member-owners of Scenic Rivers Energy Cooperative.

Any questions or comments can be directed to Watt's Happening, c/o Joan Wagner, Editor, Scenic Rivers Energy Cooperative, 231 North Sheridan, Lancaster, WI 53813 or telephone (608) 723-2121 or toll free Lancaster 800-236-2141, Darlington 800-236-6656, and Gays Mills 888-735-4314.

Richard E. Kolb Manager
Joan Wagner Editor

printed on recycled paper