

# WATT'S HAPPENING

SCENIC RIVERS ENERGY COOPERATIVE

---

LANCASTER, DARLINGTON AND GAYS MILLS, WISCONSIN

## Open Houses and Renewable Energy Forums

**Please attend SREC's member open house and renewable energy forums as follows:**

**Monday, October 23 - Gays Mills office**

Open House from 3 to 7 p.m. immediately followed by the renewable energy forum beginning at 7 p.m. The open house will feature food and prizes! For more details on the renewable energy forum see the related story below.

**Tuesday, October 24 - Darlington office**

Open House from 10 a.m. to 2 p.m., renewable energy forum begins at 10 a.m.

**Tuesday, October 24 - Lancaster office**

Open House from 10 a.m. to 2 p.m., renewable energy forum begins at 2 p.m.

*Open House is a chance for you to enjoy some food and even win prizes! You will also have an opportunity to ask questions about Scenic Rivers with our employees and members of the board of directors. Or you can just mix and mingle with your friends and neighbors!*

**October is Co-op Month!**



**Celebrate with us at one of our energy forums**

Food! Prizes!  
We hope to see you there...

**Renewable Energy Forums (Background Information)**

The Energy Policy Act of 2005 requires non-regulated electric utilities that have total annual retail electric sales greater than 500 million kilowatt hours to consider adoption of five new rate making standards that have been added to the Public Utilities Regulatory Policy Act (PURPA). The five standards that these utilities are required to consider are: net metering, fuel source diversity, fossil fuel generation efficiency, time-based metering, and distributed generation interconnection.

Although Scenic Rivers Energy Cooperative does not have annual kilowatt hour sales large enough to require us to consider the stan-

dards, (SREC has annual kilowatt hour sales of approximately 200 million) our board of directors has determined that it is in the best interests of our members to hold renewable energy forums to exchange information on the five standards. More detailed information on each of the five standards is provided in the following paragraphs.

**1. Fuel Source Diversity**

Scenic Rivers Energy Cooperative has an all requirements contract to purchase 100% of our electricity from Dairyland Power Cooperative, La Crosse, Wisconsin. Scenic Rivers Energy Cooperative does not own any generation facilities and thus, has no direct say in

the fuel source diversity decisions made by Dairyland Power Cooperative. We do have a representative on the DPC board of directors who does have a vote on these issues. At the time this is being written, we do not know if Dairyland Power Cooperative will be holding public hearings on fuel source diversity. We will pass along any comments to DPC concerning fuel source diversity that would come out of our renewable energy forums.

**2. Fossil Fuel Generation Efficiency**

The general comments that are listed under the first item, fuel source diversity, also apply to this standard.

(over...)

### 3. Distributed Generation Interconnection

The Public Service Commission of Wisconsin has adopted standards for distributed generation interconnection that are available on their website, [www.psc.wi.gov/](http://www.psc.wi.gov/) Once you are at their website, simply click on the Quick links Electric Industry link and you will see where to click on distributed generation interconnection procedures. Scenic Rivers Energy Cooperative has basically adopted these procedures.

### 4. Net Metering

It is our opinion that net metering is the subject that will generate the most interest of the five standards to be considered. Net metering basically means that a member that has some form of renewable energy on site, is interconnected to the SREC distribution system, and would sell any excess renewable energy back to SREC at the retail price charged by SREC. Our policy that is in place at this time does not provide for net metering but instead, provides that members

will be paid the “avoided cost” that SREC avoids paying to our power supplier, Dairyland Power Cooperative. We hope to discuss the pros and cons of net metering and let those in attendance at the renewable energy forums present their views on the subject.

### 5. Time-Based Metering

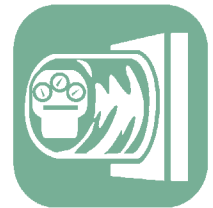
Time based metering basically refers to considering a metering system that would allow the cooperative to measure the kilowatt hours used during different times of the day and night. This type of metering would result in higher charges for energy used during high usage periods and charge less

for energy used during low usage periods. In theory this would result in lower energy bills for those who are able to shift their energy usage to more favorable times of the day or night.

### Summary

These are the five standards. However, we also intend to devote some time at our renewable energy forums to the subject of cooperative rebates for renewable program participation. We hope that if you have a strong interest in renewables or, even if you are only mildly curious, you will take time to attend the renewable energy forum nearest you.

*“This type of metering would result in higher charges for energy used during high usage periods and charge less for energy used during low usage periods.”*



The values that are important to you are the same values that guide cooperative businesses. Owned and democratically controlled by the people who use their services or buy their goods, cooperatives are motivated by service to their members, not by profit.

In the United States, more than 20 million consumers turn to cooperatives for access to products and services, fair prices and excellent customer services. While investor-owned businesses have a structure that pushes them to deliver profits to shareholders, member-owned and controlled cooperatives have a structure that pushes them to meet their customers' needs.

When members join together to form a cooperative, the business is founded on their values and needs; democratic principles; community commitment and interaction; cooperative buying power and economic advantage; people helping people.

Cooperatives are committed to building a bright future for all who may use or need their services. That's “The Cooperative Difference.”



**“...member-owned and controlled cooperatives have a structure that pushes them to meet their customers' needs.”**



*Watt's Happening* is published monthly as an information service to the member-owners of Scenic Rivers Energy Cooperative.

Any questions or comments can be directed to *Watt's Happening*, c/o Joan Wagner, Editor, Scenic Rivers Energy Cooperative, 231 North Sheridan, Lancaster, WI 53813 or telephone (608) 723-2121 or toll free Lancaster 800-236-2141, Darlington 800-236-6656, and Gays Mills 888-735-4314.

Richard E. Kolb. . . . . *Manager*  
Joan Wagner. . . . . *Editor*

Our board of directors include Dale Bevan, Don Walters, Sandy Davidson, Norman Gordon, Gerald Koeller, David Stute, Merlin Kvigne, Tom Bennett, and Ellen Conley.

printed on recycled paper