

WATT'S HAPPENING

SCENIC RIVERS ENERGY COOPERATIVE

LANCASTER, DARLINGTON AND GAYS MILLS, WISCONSIN

Celebrate Earth Day

Scenic Rivers Energy Cooperative - Meeting Electrical Demand, Protecting the Environment

By utilizing renewable forms of electrical generation we can help meet electrical demand and protect the environment. Our wholesale power supplier, Dairyland Power, has a diverse and growing renewable generation portfolio that includes wind, hydro and waste-to-energy resources.

Wind Power

Probably the most well-known type of renewable energy is wind. Strong prairie winds turn giant turbine blades at wind farms in Minnesota and Iowa. Recently, Dairyland nearly doubled its investment in wind when it signed an agreement to purchase 20 megawatts (MW) from Iberdrola's Winnebago Wind project located near Thompson, Iowa. Enough wind energy is created from this wind farm to power approximately 5,000 homes.



Hydro

Water is an excellent and abundant natural resource for generating renewable energy. Dairyland has

owned the 24 MW Flambeau Hydroelectric Station since 1951. The plant is located on the Flambeau River near Ladysmith, WI. In addition to operating the hydro plant, Dairyland has made environmental enhancements to the lake area, including improving recreational resources, upgrading the boat landing and providing a handicap-accessible fishing area.

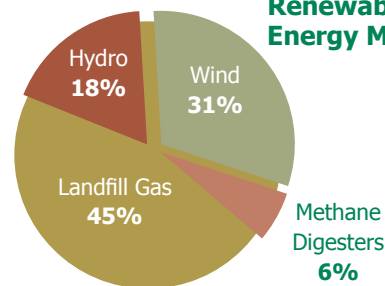
Landfill Gas-to-Energy

Dairyland provides renewable energy from three landfill gas-to-energy (LGE) facilities that are located in Wisconsin and Iowa. This innovative technology turns landfill gas created from decaying garbage into renewable energy. In total, these three facilities produce enough energy to power nearly 12,000 homes. In 2004, Dairyland received the U.S. Environmental Protection Agency's Landfill Methane Outreach Program's Energy Partner of the Year award for its Seven Mile Creek facility located near Eau Claire, WI.

Animal Waste-to-Energy

Methane digesters located on dairy farms like the one at the Norm-E-Lane Farm near Chili, WI utilize manure to generate "cow power". Methane gas digested from the manure of about 2,000 cows is burned in a 600 kW generator. Other beneficial products of manure digestion include dried solids that can be used for cow bedding or compost and a low-odor liquid used for fertilizer. Altogether, Dairyland purchases energy from five dairy farms located around Wisconsin.

2007 Renewable Energy Mix



Biomass

Dairyland recently announced its intent to purchase all of the power to be produced from a proposed new biomass power plant to be located in Cassville, WI. The facility, that will burn wood waste, is planned to come on-line in June 2010.

Evergreen Green Power Program

Evergreen is a renewable energy, "green power", program available from Scenic Rivers Energy Cooperative for those who want to do more to support renewable energy and the environment. Your voluntary support of Evergreen helps Dairyland Power to increase their total renewable generation above and beyond any state requirements. Your purchase of one 100 kWh block of Evergreen for one year is the equivalent of:

- 2,449 lbs of CO2 avoided
- 2,400 miles not driven
- 1/3 acre of trees planted

To participate in Evergreen, contact Scenic Rivers Energy Cooperative. To learn more about our renewable energy resources visit the Dairyland Power website at www.dairyland.com.

Youth Leadership Conference

Attention High School Students:

Are you looking for something fun and exciting to do this summer? Then we've got just the opportunity for you!

Come join teenagers from all around the state for three days of excitement and education this summer at the Youth Leadership Congress, sponsored by Wisconsin's rural electric cooperatives and UW- River Falls.

Held this year July 15, 16 and 17 on the campus of UW-River Falls, the Youth Leadership Congress is an annual event planned for teens by teens. At the congress, you'll have an opportunity to hone your leadership skills, learn about cooperatives, experience life on a college campus, and get to know other young leaders like yourself.

You'll hear nationally acclaimed motivational speakers, participate in discussions about current issues and other hands-on activities, and practice cooperation in team-building exercises. You also get the chance to participate in an Etiquette dinner. Everyone has the opportunity to run for a seat on the six-member statewide Youth Board, which plans the next year's congress

Best of all, this unique opportunity won't cost you a thing, as Scenic Rivers Energy Cooperative will pay your tuition and provide transportation to and from the event!

Sounds great, doesn't it? If you'll be a high school sophomore, junior, or senior in the 2009-2010 school year and you'd like to take advantage of this great opportunity, contact Megan Graney at, 608-723-2121 or 800-236-2141. This opportunity is not limited to SREC members- any area high school student may apply!



QUESTLINE

Scenic Rivers Energy Cooperative is offering our members a new, FREE eNewsletter called Questline. Sign up online today to access the quarterly Questline eNewsletter, filled with great information on ways to lower your energy use and save money. In addition to timely and relevant articles, Questline comes complete with the following information, delivered right to your email inbox:

- Energy conservation information and resources that can save you and your household energy and money.
- Access to an easy-to-search Energy eLibrary filled with valuable tips on green living, electrical safety, the best energy efficient appliances and more.
- Access to HVAC, home energy use and carbon-footprint calculators- providing information to help you benchmark your home's energy use and identify energy-saving opportunities.

We know that everyone is looking to control their household budget and minimize their impact on the environment-

Questline is part of the answer!

Visit the website:

[http://www.myenergytips.com/
Register.aspx?accountID=46](http://www.myenergytips.com/Register.aspx?accountID=46)

Annual Meeting!

Scenic Rivers Energy Cooperative directors and employees invite you to attend our 71st Annual Meeting on April 14, 2009, at the Youth and Ag Building located on the Grant County Fairgrounds. Doors will open at 6 p.m., and dinner will begin at 6:30 p.m. Frankie Brandt will provide musical entertainment from 6 to 7:10 p.m., and the meeting will begin at 7:30 p.m.

Each member in attendance (husband & wife joint membership counts as one) will receive a \$5 credit on their May bill. We will have a separate room for kids during the meeting with adult supervision. Members will also be eligible for prize drawings at the end of the meeting.

Districts #3, #4, & #8 are up for election. Biographical information on all the candidates was included in your annual report packet, which you should have received in March.



Be Prepared: Making It Through a Power Outage

While power outages rarely occur, it is best to be ready and make sure that your family is safe and comfortable during a prolonged outage. The following tips provide a checklist of items that you need to be properly prepared, as well as guidance on what to do during and after a power outage.

Before a Power Outage

Keep a battery-operated radio for news and weather reports. Do not forget to keep a fresh supply of batteries.

Keep flashlights readily available around the house. Make sure that you know their location in case you need to find them in the dark.

Have a supply of bottled water handy in case the water supply is interrupted.

Maintain supplies of food items such as dried fruits and nuts that make filling and healthy snacks, but do not require cold storage or preparation.

If you have an alternative heating source—such as a wood stove or fireplace—make sure that you always keep an adequate supply of fuel.

Ensure that back-up generators are well-maintained and appropriately stocked with fuel.

Keep your freezer full. This will help to preserve food for a longer period of time.

Remember that cordless phones will not work without power. Keep a corded phone or fully-charged cell phone available to use when the power is out.

Keep a supply of heavy blankets or quilts handy to use in case of a power outage during cold weather.

Back-up any important work you are doing on your computer on a frequent basis.

If any family member requires access to powered medical equipment, coordinate an emergency plan with

your doctor and include neighbors and relatives.

During a Power Outage

Monitor local radio stations for power restoration activities.

Avoid opening the freezer and refrigerator. This will help to preserve food longer.

Disconnect or turn-off appliances and electronic equipment that were on when the power went out. Leave a light on so that you know when the power has been restored.

Keep candles away from furniture, draperies, and other flammable materials. Also, keep children and pets away from open flames.

In cold weather, wear extra layers of clothing to stay warm and put extra blankets or sleeping bags on beds to keep warm while sleeping. In case of hot weather, open windows and doors to keep the house cool and drink plenty of fluids.

After a Power Outage

Do not enter a flooded home unless you are sure that the power is shut-off. Avoid using any flooded appliances or equipment unless they have been inspected by a qualified electrician.

After power is restored, wait 10-15 minutes and then gradually turn on appliances and equipment. This will avoid overloading the power system.

Food safety. A refrigerator will keep food at a safe temperature for

up to four hours during a power outage if it is unopened. A freezer will keep its temperature for 24-48 hours depending on how full it is. Discard any perishable items that may not be safe to consume.

Having Fun

Without access to television, video games, and computers, keeping the whole family entertained during a prolonged outage can be challenging. With a little creativity however, your family can discover some fun new activities and maybe even get to know each other a little better.

Play games. Cards or board games are always a fun activity, especially around the fire or by candlelight. Depending on the age of the children, guessing games, such as charades or I spy, can be entertaining and challenging.

Read aloud or tell stories. This is an ancient activity and almost a lost art in our media driven age. Scary stories by candlelight can be especially fun, but may depend on the age of any children in the house.

Go camping. If weather permits, set up a tent in the backyard. Start a fire, roast marshmallows, and tell ghost stories. In inclement weather, camp in the living room. This can be an especially fun activity for small children.

Reprinted with permission from Tech Resources



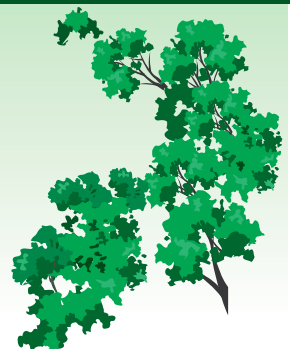
Tree Maintenance

Tree Crew Locations for April-

Grant County- Wingville, Clifton,
Fennimore & Liberty

Crawford County- Clayton, Eastman,
& Prairie du Chien

Vernon- Kickapoo



Pole Safety- No burning or posting

When our line crews climb utility poles, they depend on having solid, unobstructed structures underfoot. However, this isn't always so.

Scenic Rivers Energy Cooperative strives to keep poles as safe as possible, but some aspects of maintaining unscathed poles are out of the co-op's control. For example, when people burn the ditches and start a pole on fire or attach signs, they create serious hazards for line personnel as well as themselves.

Fires- Many landowners like to burn ditch lines in the spring. Many times the fires will start the poles on fire. If left unattended the pole can burn for days causing a major hazard to both the public and the crews working on the lines. In many cases, the guy guards are destroyed leaving the guy wires extremely hard to see.

Keep in mind, all structures and equipment that may be damaged will need to be replaced at the expense of the individual responsible for the damage.

Sharp Objects such as nails, tacks, staples, and barbed wire all present possible dangers for co-op line crews who climb poles all hours of the day and night (in the worst of conditions). If a lineperson's hooks slip while he is climbing, his descent down could become much more severe if an arm or leg catches a nail or other object tacked into the pole. Sharp objects not only have the possibility to compound a fall, but they can also puncture rubber gloves and other safety equipment, making a lineperson vulnerable to electrocution. We ask that you please not attach or affix any signs, posters, fences or other fixtures to the co-op's poles.

Additionally, when a lineperson has to remove objects from poles or fix a burnt pole in order to climb during an outage, it takes that much longer to restore power. We want them to be safe for our line crews and for you!



Diggers Hotline

Call Before You Dig- It's the Law! Digging in your yard and hitting an underground utility can cause serious injury or death. Always call 811 before you dig. This one free, easy call gets your utility lines marked and helps protect you from injury and expense. Call at least 72 hours before you plan any digging projects. It's the law to call before you dig. Not doing so can cost money and lives. Visit www.call811.com for more information.



New Geothermal Website

www.wisgeo.org

The Wisconsin Geothermal Association has launched a new Web site, www.wisgeo.org. Geothermal heating and cooling systems are classified as renewable systems and are extremely economical to operate. If you're considering installing a geothermal system, check out this Web site to find out how this system can work for you. The site includes a listing of manufacturers and dealers.

Power Your Mind – Learn who is bringing you power

Bob Olson

Lineman - Crawford County

Family-

- Wife: Sherrie
- Sons: Trevor and Clinton
- Daughter: Sarah

Hobbies-

Restoring and of course driving old cars, trucks and motorcycles



Why did you choose to become employed at SREC?

I wanted to become a lineman and stay in the area.

What do you enjoy most about your job at SREC?

I really enjoy working outside.

WATT'S HAPPENING

Watt's Happening is published monthly as an information service to the member-owners of Scenic Rivers Energy Cooperative.

Any questions or comments can be directed to *Watt's Happening*, c/o Megan Graney, Editor, Scenic Rivers Energy Cooperative, 231 North Sheridan, Lancaster, WI 53813 or telephone (608) 723-2121 or toll free Lancaster 800-236-2141, Darlington 800-236-6656, and Gays Mills 888-735-4314.

www.sre.coop

Richard E. Kolb. CEO
Megan Graney. Editor

Our board of directors consists of Tom Bennett, Don Walters, Sandy Davidson, Norman Gordon, Gerald Koeller, David Stute, Merlin Kvigne, Larry Butson, and Ellen Conley.



printed on recycled paper