

# WATT'S HAPPENING

SCENIC RIVERS ENERGY COOPERATIVE

LANCASTER, DARLINGTON AND GAYS MILLS, WISCONSIN

## Scholarships

College scholarships will be awarded through a drawing at the 2008 Scenic Rivers Energy Cooperative 70th Annual meeting. A \$500 scholarship will be awarded to each of the following:

- \*One per high school in the SREC service area
- \*One at large per county for home-schooled students, private-schooled students and non-traditional students

The \$500 scholarship will be applied after successful completion of your first semester of technical school or college. Transcripts must be mailed to the Cooperative proving a "C" or better average with at least 12 credits. Upon receipt of the transcripts a check will be made out to the school for the second semester.

### Qualifications:

1. The student or the student's parent or legal guardian must be a member of Scenic Rivers Energy Cooperative.
2. The application must be mailed to the address below PRIOR to April 7th, 2008 to qualify:



Scenic Rivers Energy Cooperative  
Attn: 2008 Scholarships  
231 N. Sheridan St.  
Lancaster, WI 53813

3. The student must be present at the Scenic Rivers Energy Cooperative annual meeting to be held April 10, 2008 to win.
  4. The student must receive college credit for at least 12 hours at a minimum "C" average to be awarded the scholarship.
  5. Simply fill out the application form and return it to the address stated above. Applications can be picked up at any area high school or any of the SREC three offices: Lancaster, Darlington, Gays Mills.
- If you have questions regarding the 2008 Scenic Rivers Energy Cooperative Scholarship please contact our office at 800-236-2141 ext. 105.

## Annual Meeting

Scenic Rivers Energy Cooperative directors and employees invite you to attend our 70th Annual Meeting on April 10th, 2008, at the Youth and Ag Building located on the Grant County Fairgrounds. Dinner will be served starting at 6:30p.m., entertainment by the Fennimore Handbell Esemble will begin at 7:10 p.m. and the meeting will begin at 7:30 p.m. There will be a health fair where you can have your blood pressure taken.

Each member in attendance (husband & wife joint membership counts as one) will receive a \$5 credit on their May bill. We will have a separate room for kids during the meeting with adult supervision. Members will also be eligible for prize drawings at the end of the meeting.

Districts #1, #5, & #9 are up for election. Biographical information on all the candidates will be included in your annual report packet, which you should receive in March.

### \*Drop Boxes\*

\*\* Drop boxes are available at Dick's Piggly Wiggly in Lancaster, Platteville, Darlington, and Prairie du Chien for those members who would like to save on postage. The store will mail the bills the following business day. Please plan extra time for the mail to be delivered to SREC. Payments will be posted the day they arrive at SREC.

## Rebates-

Rebates offered by Scenic Rivers Energy Cooperative for Year 2008 \*Call for details\*  
(Keep in mind that other rebates are offered through Focus on Energy, so if you have a question about a rebate please call our office.)

### ENERGY STAR

Room Air Conditioner	\$25
Clothes Washer	\$50
Refrigerator	\$25

### Electric Water Heaters

.91 Efficiency	52 gallons		<b>FINAL COST</b>
.86 Efficiency	80 gallons	\$250.00	\$440.00 (10-yr warranty)
.81 Efficiency	120 gallons	\$480.00	\$212.25 (6-yr warranty)
.93 High Efficiency	80 gallons	\$250.00plus \$50 from Focus	\$430.00 (10-yr warranty)
			\$335.00 (6-yr warranty)

### Air Conditioners & Air Source Heat Pumps

SEER 14 or greater \$60.00 per ton

All Earth-Coupled Heat Pumps \$140.00 per ton

### COST OF ITEM

#### Electric Plenum Heaters

15kw	\$225.00	\$850.00—final cost	\$625.00
20kw	\$300.00	\$950.00—final cost	\$650.00

#### Electric Boiler

9kw	EMB-W-9	\$150.00	\$870.00—final cost	\$720.00
13kw	EB-WA-13	\$200.00	\$1475.00—final cost	\$1275.00
18kw	EB-WA-18	\$275.00	\$1575.00—final cost	\$1300.00
23kw	EB-WA-23	\$350.00	\$1825.00—final cost	\$1475.00
27kw	EB-WA-27	\$400.00	\$1900.00—final cost	\$1500.00

#### Electric Thermal Storage Units (ETS)

2102 series (2.4, 3.0, 3.6 kw)	\$50
2103 series (3.6, 4.5, 5.4 kw)	\$75
2104 series (4.8, 6.0, 7.2 kw)	\$100
2105 series (6.0, 7.5, 9.0 kw)	\$125
2106 series (7.2, 9.0, 10.8 kw)	\$150

#### 20% off retail cost

\$1020.00	final cost \$	970.00
\$1175.00	final cost	\$1100.00
\$1345.00	final cost	\$1245.00
\$1585.00	final cost	\$1460.00
\$1775.00	final cost	\$1625.00

#### Electronically Ballasted Fluorescent Fixtures

\$6.50 per ballast

#### Metal Halide Fixtures

\$10.00 per fixture

#### Sodium Vapor Fixtures

\$10.00 per fixture

\*\*If plenum heater or boiler is a different kW than what is listed above, we will rebate at \$15.00/kW. The rebates listed may require the member to meet certain conditions. Please contact our office at 800-236-2141 x 105 or 130 for more information.

## Wings over Wisconsin Seed Day

The Southwest Chapter of Wings Over Wisconsin is hosting their annual Seed Day on Thursday, March 13, 2008 from 9 a.m. until 1 p.m. at the Scenic River's Energy Cooperative Lancaster site at 231 N. Sheridan. Corn, sorghum, and sunflower seed will be available free to landowners for planting on wildlife food plots. Food plots must not be harvested, but left for wildlife food and habitat.

Membership in Wings Over Wisconsin is not required to receive seed. However, new members are always welcomed. This is the only day that free seed is available, so if you plan to plant this spring, please be there or send your representative to pick up seed.

A limited quantity of bluebird houses and bird feeders will also be available. Lunch will be served.



## Tree Trimming Report

Scenic Rivers Energy Cooperative uses contractors to save the cost of specialized equipment for much of the work performed by the cooperative. The contractors are used for tree trimming, underground installations, underground maintenance, underground locating and pole testing. If you see a strange vehicle working on our system feel free to give us a call to verify their authority of work. For the month of March:

Tree trimming crews will be working in the following areas:

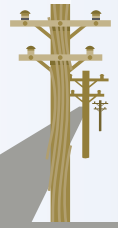
**Grant**

**County:** Patch Grove, Millville, Wyalusing

**Crawford County:** Prairie du Chien, Bridgeport

**Lafayette County:** Fayette, Lamont, Wiota, Darlington, Belmont, Kendall, Seymour, Willow Springs

## Questions on the line



### Why is it necessary to have load management programs?

Load management programs enhance reliability for all members during extraordinary times. It also helps reduce costs for all coop members with additional savings for participating members. SREC and its partners in the Dairyland system of electric cooperatives are together achieving a total savings of over \$4 million a year. Just in the month of January, the load management program saved Dairyland Power Cooperative \$434,680.84- ultimately saving you an increase in rates.

**Did you know the load management program saves Dairyland from having to generate 60 MW in the summer and 152 MW in the winter? That's the equivalent of a small power plant!**

Because power suppliers need to own or purchase enough electric capacity to meet their needs during periods of peak use, load management decreases our costs by reducing the total capacity that our power supplier needs to have available. It also decreases the total amount of energy that we need to produce overall. Finally, load management frees up additional capacity, lowering the cost for all coop members.

## Electricity on Demand

When electricity consumption rises above typical levels it's said to "peak"- something that happens every evening when families return home, switch on lights, and adjust thermostats, or on hot, humid weekday afternoons in the summer when air conditioners get turned on everywhere. Generation and transmission (G&T) cooperatives, which supply wholesale power to local distribution coops like Scenic Rivers Energy Cooperative, often meet that spike by firing up extra sources of generation, ensuring that lights stay on.

Combustion turbines are a common way G&Ts quickly provide that boost of electricity. Similar to massive jet engines, these turbines typically run on natural gas and can be as small as a compact car or as large as a manufactured home.

Although technology behind the turbines has been around since the 1950s, electric cooperatives are finding new ways to use them more efficiently, saving money in the process.

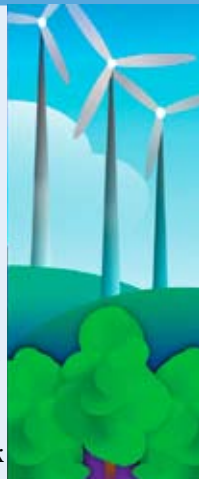
The Cost-to-Start Program was recently developed to quickly analyze available turbines during

periods of high electric demand. The software program can identify the least expensive mix needed to supply a given amount of extra power. It was developed by the Cooperative Research Network (CRN), a research organization funded by hundreds of electric cooperatives from around the country.

Advances to increase combustion turbine efficiency are also on the horizon, one of which reduces the "warm-up" period needed before startup. Currently systems idle for 12 hours a day when on call. Recent research and development has reduced that idle time to one hour, helping electric cooperatives cut operating and maintenance costs.

Keep combustion turbines in mind the next time you turn on the lights. Somewhere out there, a combustion turbine may have just kicked on.

-Scott Gates, NRECA



# Power Your Mind – Learn who is bringing you power

## David Stute

District 9

### Representing -

Adams, Argyle, Blanchard, Fayette, Jordan, Lamont, Moscow, Nora, Wayne, Winslow, Wiota

### Family -

Happily married to Margaret (Peg) Rasch; 4 children -

- Jim, East Troy, UW-Extension crops & soils agent for Rock Co. (who lives on the Walworth Co. farm I grew up on)
- Suzanne, Madison, a supervisor/counselor for Family Services
- Tony, Baraboo, director of the welding program at Madison Area Tech. College
- Rebecca, Washington DC, my stepdaughter who died in 2000
- Added bonus of 2 lovely granddaughters.

### Occupation -

Retired, after 31 years as staff attorney, chief staff attorney and Director of the Legislative Council Staff, a 31-person nonpartisan

service agency of the Wisconsin Legislature. Still work at things, though - now serve as chairperson of the Town of Wiota and the Town's plan commission.

### Hobbies -

Tending to the 35 acres of our 157 acre place that is being converted to prairie; beating back the exotic plants that want to wipe out the spring wildflowers in the woods; and following local government. Someday, when things slow down, I would like to get a blacksmith shop up and going.

### Why did you choose to become an SREC director?

In late 2004, about a year after we moved to the Wiota area, I was asked by Willard Shager of the Dist. 9 nominating committee if I would be a candidate for the board. After a call to Rick Kolb to understand what this all meant, I said "yes". The election result was favorable, and here I am.



### What do you enjoy most about serving as a director?

Working with 8 other directors and SREC management to do the best possible job that we can for our cooperative - that is, providing reliable power at low cost, while keeping an eye on the needs of the future. I also enjoy learning more about the electricity generation and distribution business, and the unique features of operating a cooperative. It has been 3 rewarding years.

## Currently Cooking

If you have a favorite recipe that you are willing to share please send it to SREC!  
Another great recipe from the chat room on [www.copykat.com](http://www.copykat.com).

### To Die for Chocolate Cake

- 1 box Devil's Food Cake
- 1 (3oz) box instant chocolate pudding
- 2 C. sour cream
- 5 eggs
- 1 C. melted butter
- 1 tsp. almond extract
- 1 C. chocolate chips

In a large bowl, beat first 6 ingredients until well blended. Mixture will be thick. Stir in chocolate chips. Pour into greased bundt pan. Bake at 350 degrees for 55-60 minutes. Dust with powdered sugar or drizzle with a glaze. ENJOY!



## WATT'S HAPPENING

Watt's Happening is published monthly as an information service to the member-owners of Scenic Rivers Energy Cooperative.

Any questions or comments can be directed to Watt's Happening, c/o Megan Graney, Editor, Scenic Rivers Energy Cooperative, 231 North Sheridan, Lancaster, WI 53813 or telephone (608) 723-2121 or toll free Lancaster 800-236-2141, Darlington 800-236-6656, and Gays Mills 888-735-4314.

[www.sre.coop](http://www.sre.coop)

Richard E. Kolb..... CEO  
Megan Graney..... Editor

Our board of directors consists of Tom Bennett, Don Walters, Sandy Davidson, Norman Gordon, Gerald Koeller, David Stute, Merlin Kvigne, Larry Butson, and Ellen Conley.



printed on recycled paper